

QUEER MAPS



QUEERING THE MAP

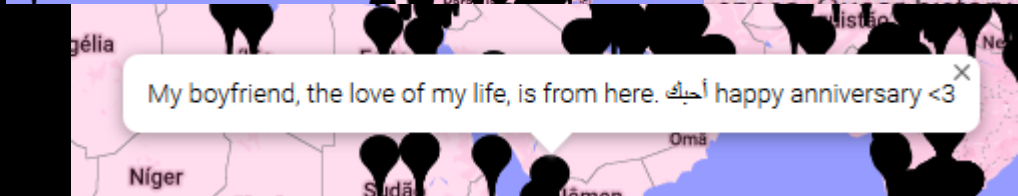




Queering the Map is a community-generated mapping project that geo-locates queer moments, memories and histories in relation to the spaces that hold queer memory, from park benches to parking garages, to mark moments of queerness wherever they occur.

I made out with a guy here once, i was so high and our kiss lasted for almost half an hour. It was so intense that it made me lose my mind for a while

There are no guidelines to what constitutes an act of queering space. If it counts to you, then it counts for *Queering the Map*. Anything from direct action activism to a conversation expressing preferred pronouns, from flirtatious glances to weekend long sex parties; all are part of the project of queering space.



My boyfriend, the love of my life, is from here. أحبك happy anniversary <3

Through mapping these ephemeral moments, *Queering the Map* aims to create a map that enrich our collective memory.

Through mapping these ephemeral moments, *Queering the Map* aims to create a map that reveals the ways in which we experience space.

Rainbow Pride to remind us that Bangladesh is not just a Western neoliberalism and the Pink Pound. P



NARRATIVA

MODOS

DEEP MAPPING

EMOÇÕES

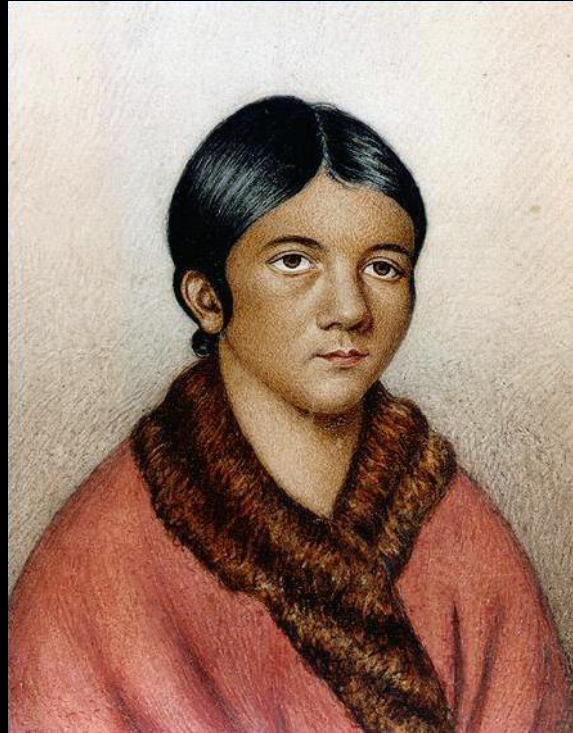
CORPO COMO PONTO
DE PARTIDA



SHANAWDITHIT



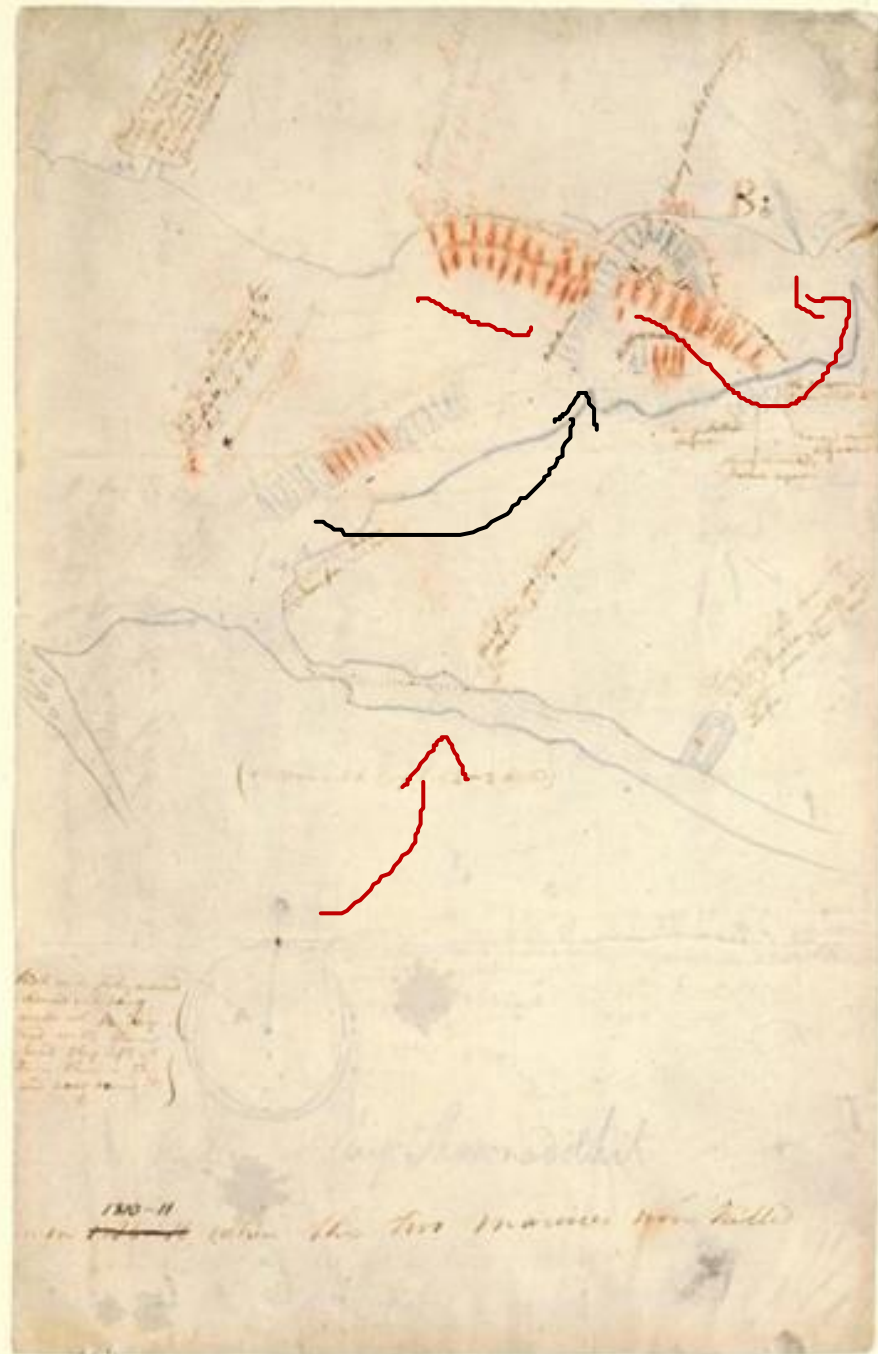
BEOTHUK

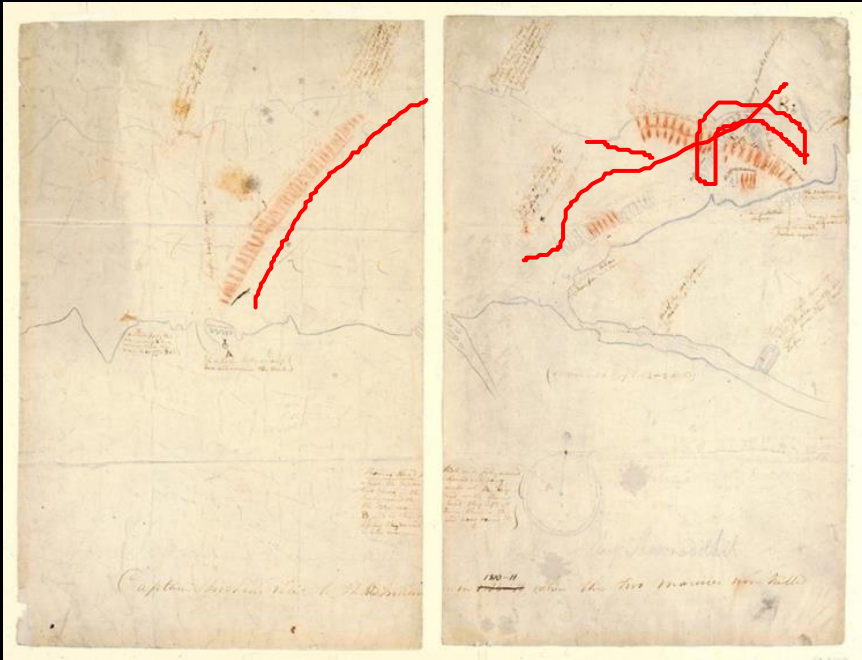


NEWFOUNDLAND

CANADÁ







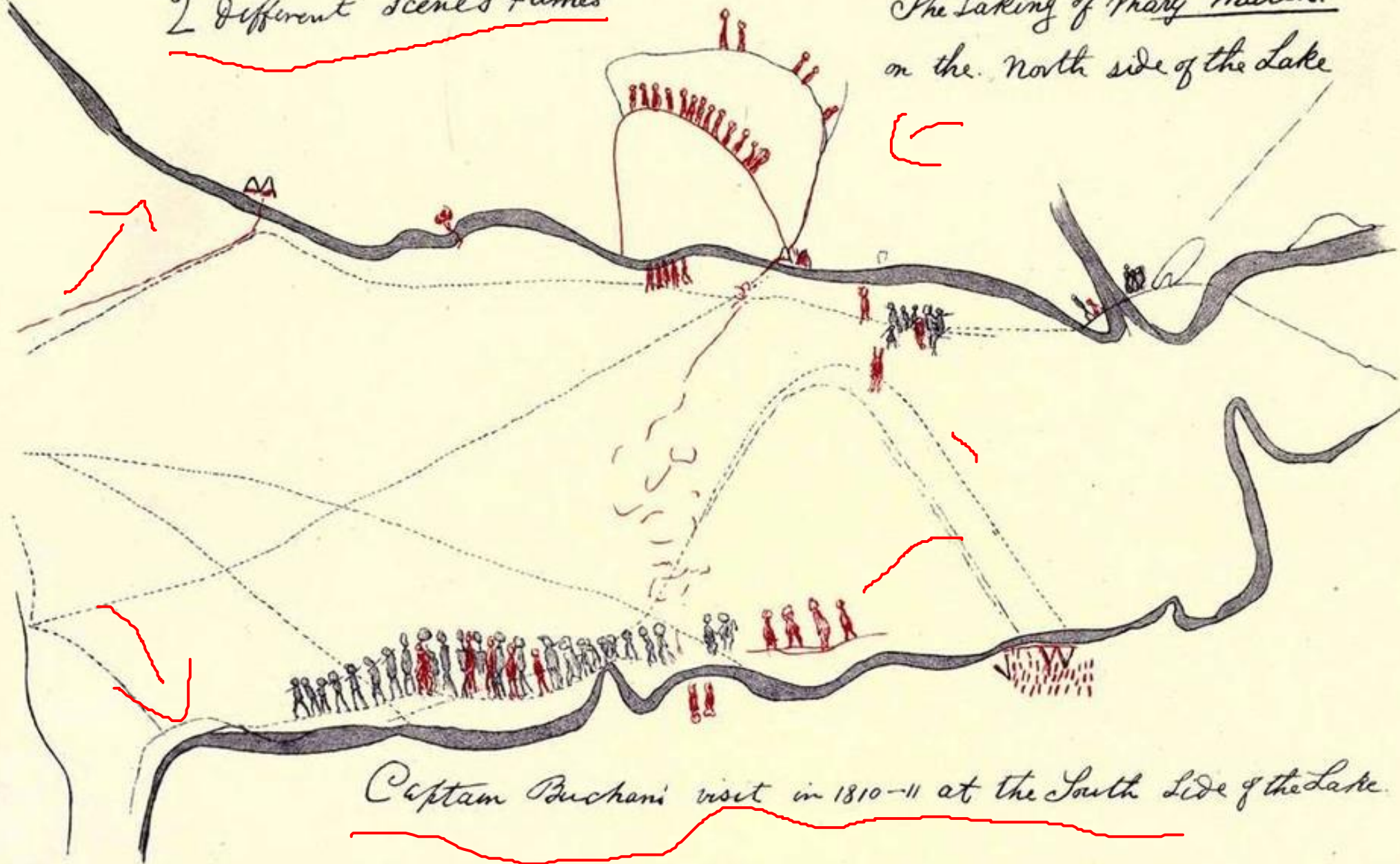
“The uneven possibilities of travel by foot across uneven landscape.” – Matthew Sparke

“Challenges ‘the disembodied abstraction’ of colonial cartography and its promotion of the myth of terra nullius.” – Fiona Polack



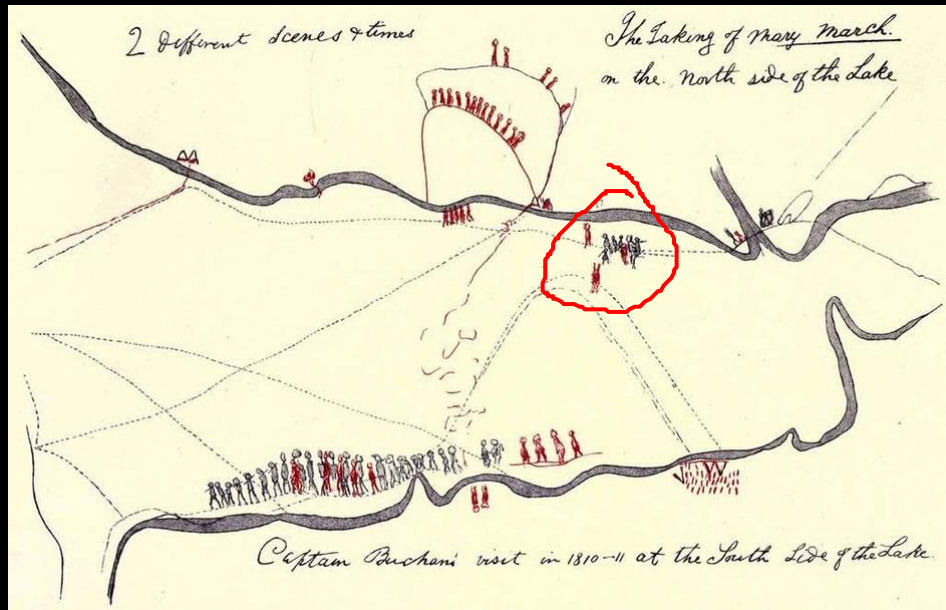
2 different scenes & times

The Taking of Mary March.
on the North side of the Lake



Captain Buchan's visit in 1810-11 at the South Side of the Lake.





“[...] depicting Demasduit’s abduction in 1819 on the north side of the lake, while simultaneously reprising Captain Buchan’s visit in 1811 on the Southern shore. Perhaps, then Shanawdithit portrayed Demasduit’s “cemetery” simply because it was an important personal landmark to her. Indeed, archaeologist Donald Holly persuasively argues that gravesites were places of intense reverence and markers of identity for the Beothuk.” – Fiona Pollack



CORPORIFICAÇÃO DOS MAPAS

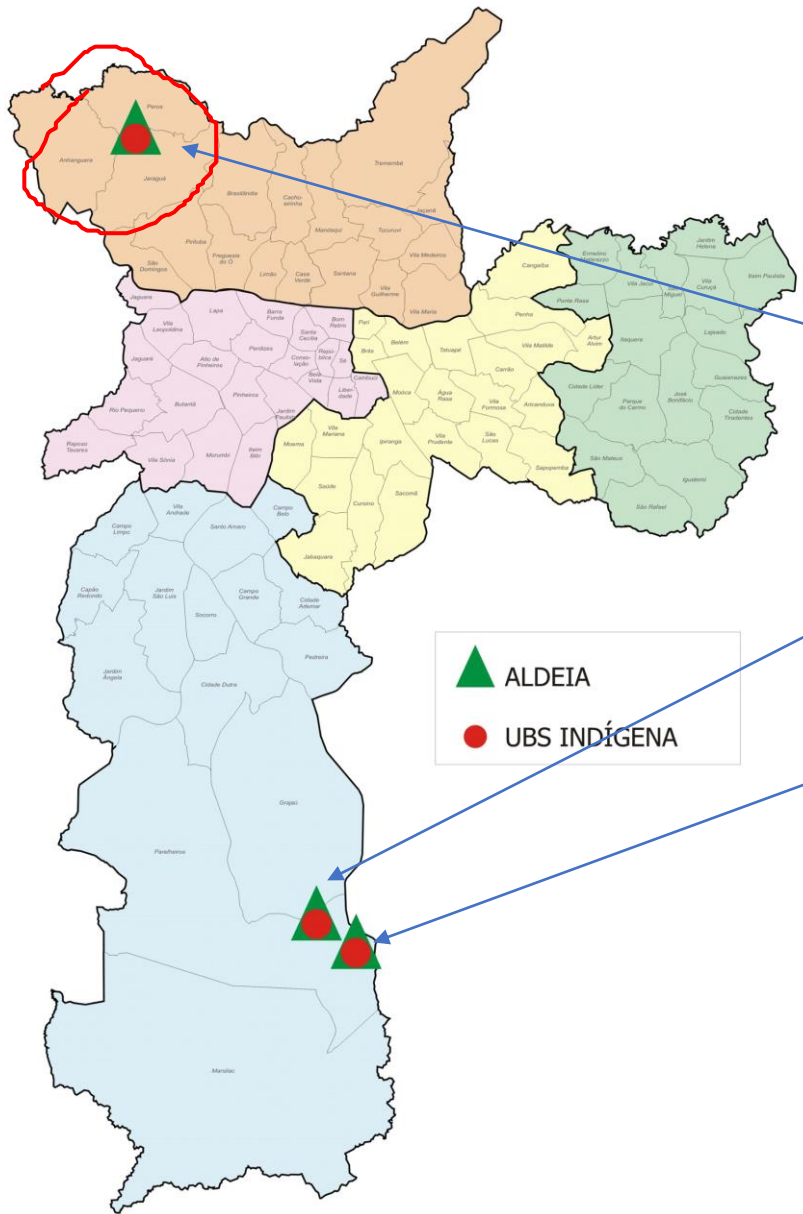
REPRESENTAR
A EXISTÊNCIA
CORPÓREA DE
ALGUÉM

SUBJETIVIDADE



SÃO PAULO





JARAGUÁ - GUARANI

KRUKUTU - GUARANI

GUARANI DE BARRAGEM – GUARANI KAIOWÁ



VULNERABILIDADE CORPÓREA

CIDADE

FIXAÇÃO

URBANO



OBRIKADO!



